

OCXO 2522 SMD

Features:

- High reliability
- Mass production with good uniformity
- ISO9001:2008 & ISO 14001:2004 certificated
- ROHS compliant
- Custom build capability



Specification:

Parameter	Min	Typ.	Max	Unit	Condition	Note
Frequency Stability						
Frequency	5.0		100.0	MHz		
Initial Frequency Accuracy	-100		+100	ppb	@Vs=3.3V, 25°C	
Supply Variation	-1.0		+1.0	ppb	Vs±5%, @25°C	
Load Variation	-1.0		+1.0	ppb	CL±5%, @25°C	
Aging	per day	-0.3	+0.3	ppb	Aging after 30 days of operation	For 26.00MHz operational frequency
	first year	-80	+80	ppb		
	10 years	-0.4	+0.4	ppm		
Temperature Stability	-10		+10	ppb	-20°C~+70°C @ 25°C	
Short Tem Stability (in still air)			0.01	ppb/s	after power on 1hour@25°C	
Warm -up time			5	min	Within 0.1PPM of final frequency with reference after 1 hour on	
Start-up Time			500	ms		
Supply Voltage/Current						
Voltage Supply	3.135	3.3	3.465	V		
Operating Current			600	mA	during warm up	
			250	mA	at steady state	
Output Characteristics						
CMOS	Load		15	pF		
	Output Level(VOL)			0.5	V	
	Output Level(VOH)	3.8			V	
	Duty Cycle	45		55	%	
	Rise Time/ Fall Time			5	ns	

* Above specification subject to change without prior notice, please consult our sales @ www.crystal-bj.com



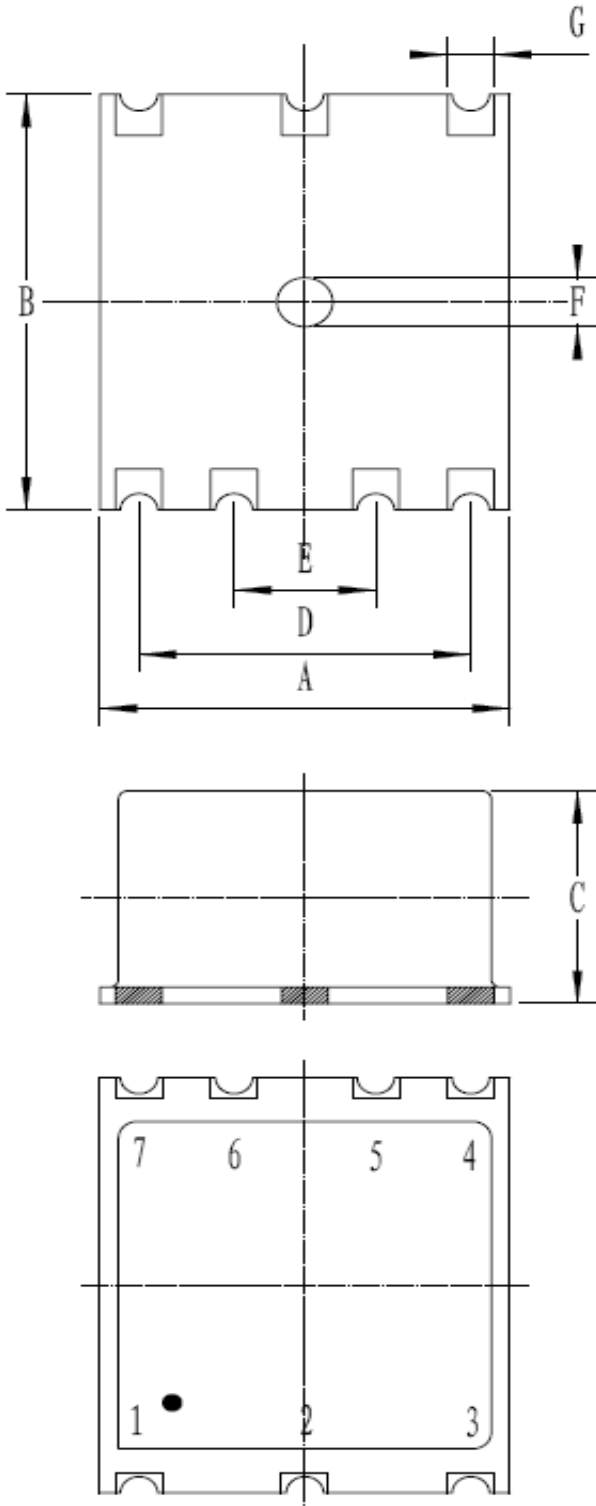
Spurious			-70	dBc		
Phase Noise						
Phase Noise			-90	dBc/H z	@1Hz	For 26.0MHz operational frequency
			-120		@10Hz	
			-140		@100Hz	
			-145		@1KHz	
			-150		@10KHz	
Voltage Control Characteristics						
Control Voltage Range	0	1.65	3.3	V		
Frequency tuning range	-2.0		-1.0	ppm	Vc=0V	For 26.00MHz operational frequency
	-200		+200	ppm	Vc=1.65V	
	+1.0		+2.0	ppm	Vc=3.3V	
Slope	Positive					
Linearity	-10		+10	%		
Input Impedance	100			KΩ		
Mechanical specification & Package						
Package Size	Refer to the below drawing					
Pin Connector Size						
Pin Connector Definition						
ROHS	RoHS compliant (network exempted)					

Environmental, Mechanical Conditions	
Operating temp range	-20°C~+70°C
Operable temp range	-40°C~+85°C
Storage temp range	-50°C~+105°C
Drop Test	The test shall be carried out as the provisions of the IEC60028-2-32 test Ed. 10cm height, 3 times on hard board with thickness of 3cm
Bumping Test	Device are bumped to three mutually perpendicular axes at peak acceleration of 400m/s ² , each 4000±10 times , 6ms pulse duration time.
Vibration test	Frequency range: 1Hz-4Hz-100Hz-200Hz Acceleration: 0.0001g ² /Hz-0.01g ² /Hz-0.01g ² /Hz-0.001g ² /Hz Grms=1.15g Sweep time: 30 minutes (perpendicular axes each sweep time)
Mechanical Shock	100g, 6mS duration, 1/2 sine wave, 3 shocks each direction along 3 mutually perpendicular planes.
Thermal shock	0.5h@-40°C , 0.5h@+85°C , Note: the changing time < 30 seconds, cycling for 100 times

* Above specification subject to change without prior notice, please consult our sales @ www.crystal-bj.com

Dimensions:

Unit: mm



Pin Function:

Pin No.	Pin Function
1	VC
2	NC
3	VS
4	Output
5	NC
6	NC
7	GND

Symbol	Dimension (mm)	
	Min	Max
A		22.0
B		25.4
C		13.0
D	17.7	17.9
E	7.5	7.7
F		3.0
G	2.4	2.6



How to Order

OC 22

Code	Size (mm)
OC 22	25.4X22X13

Output

Code	Specification
L	LVC MOS
H	HCMOS
S	Sine Wave

Supply Voltage

Code	Specification
3	3.3V ± 5%
5	5V ± 5%
2	12V ± 5%

Temperature Range

Code	Specification
A	0°C to +70°C
B	-20°C to +70°C
C	-40°C to +85°C

Temperature stability

Code	Specification	Temp. range code Available
27	± 2X10 ⁻⁷	A~C
17	± 1X10 ⁻⁷	A~C
28	± 2X10 ⁻⁸	A~C
18	± 1X10 ⁻⁸	A~C
58	± 5X10 ⁻⁸	A~C
69	± 6X10 ⁻⁹	A~B
59	± 5X10 ⁻⁹	A~B

Frequency

Eg; 26.000MHz

P/N Example: OC22H3B18-26.000MHz